



Sarah MacNeilage Patey, DBA Diver for Hire, Epping, NH
diverforhirenh@gmail.com

Jamie Burleigh, DBA LTD Diving, Nottingham, NH
ltddivingnh@gmail.com

August 23, 2025

Extraction Report

Location: Lake Monomonac, Rindge, NH

Date(s): August 21, 2025, August 22, 2025

Exotic/Invasive Plant(s): Variable milfoil

Diver(s): Sarah MacNeilage Patey, Jamie Burleigh

Support Crew: None

Total amount extracted (in gallons): 36.00

Total time worked (in hours): 15.0

Detailed report includes Extraction Narrative, Extraction Log, Photos

Narrative:

Divers started at the cove off Robertson Road, where the previous weed control diver extracted. Divers extracted one very large, eight smaller, and the remnants of variable milfoil plants throughout the cove and what appeared to be a very large pull pit. In the pull pit, divers extracted clusters of plants with two to three fronds about four feet tall or more surrounded by baby plants no more than three inches tall. In general, plants were growing in water three feet deep. Divers were silted out and determined to revisit this area the next morning. They left two markers in the pull pit, and another in the mouth of the cove, where a plant was spotted as they moved northward. Divers moved to the long, north-most cove, where they extracted three plants: one just in the lily pads on the right at the edge of the rounded inner cove, one at the surveyed mark, and one before the Baja speedboat. Except for the plant near the speedboat, the other two plants were laying over and covered with mature bladderwort. The plant in the lily pads was in one foot of water, while the other two were in water five feet deep. The deeper plants had long fronds of at least four feet in length. Divers transited to the corner of Monomonac Terrace and Paradise Island Road, where ten large plants were readily seen laying over on the surface. Underwater, plants were chopped up and fragments were strewn about. Plants were rooted in a mix of silt, native plants and algae one foot deep. Four of the plants had dense root balls. The other plants had shallow roots from which single fronds grew. All of the variable milfoil plants exhibited a mix of old fronds, which broke to the touch at the center surrounded by fronds with white roots growing from them, and fronds with new, green fronds budding. Divers were again silted out, and would return the next day to extract the remaining plants in this cove.

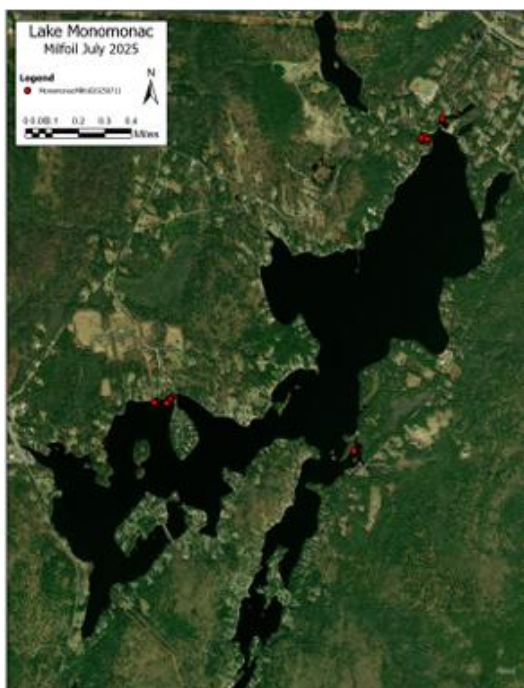
Divers began the second day extracting the single variable milfoil plant at the mouth of the cove off Robertson Road and rechecking the cove for additional plants and remnants in the large pull pit. Divers extracted all they could see and feel from further in the cove. One large plant was found in the middle of the cove along the edge of the large pull pit and another eight plants were found past the pull pit closer to the inlet. Divers transited to the single spot marked in the shallow cove on East Monomonac Road. No variable milfoil; instead, divers saw abundant and large swaths of native milfoil. Across the lake, at the three points west of the large field along Monomonac Terrace and Paradise Island Road, divers extracted one small, single stem plant and one large plant. The large plant, growing around and under the lily pad cluster, had long linear thick roots connecting surface level fronds to nascent plants along the lake bottom. The roots of these plants were intermingled with those of the lily pads. Divers moved back to the large field in the corner of Monomonac Terrace and Paradise Island Road, where they checked the pull pits from the previous day and extracted the remainder of the plants leading directly to the dock. At the dock were long fragments floating on the surface. Leading up

to dock were several small in volume but large in appearance plants, and one medium plant with obvious chopped off fronds. One small plant was situated diagonally to the right of the dock, but there were no other plants in its vicinity. Like those extracted the previous day, these variable milfoil plants were in one foot of silt and algae. The few tiny looking plants, growing up around the small plants, happened to be already a foot tall, as only a few inches were seen on the lake bottom growing up from this bottom type. On their way back to the boat launch, divers checked for variable milfoil plants they may be able to see from surface along LaChance Drive. They did not see any plants from the surface to extract.

Log:

Diver	Date	Water Body	Vessel Used	Extraction Location	Number of Bags	Yield (Gallons)	Bottom Type
Jamie Burleigh	8/21/2025	Lake Monomonac	16' Starcraft	Robertson Road cove	1	2.50	Silt
Sarah MacNeilage Patey	8/21/2025	Lake Monomonac	16' Starcraft	Robertson Road cove	1	2.50	Silt
Jamie Burleigh	8/21/2025	Lake Monomonac	16' Starcraft	North-most long cove	1	1.00	Silt
Sarah MacNeilage Patey	8/21/2025	Lake Monomonac	16' Starcraft	North-most long cove	1	1.50	Silt
Jamie Burleigh	8/21/2025	Lake Monomonac	16' Starcraft	Paradise Island large cluster	2	8.00	Silt, algae
Sarah MacNeilage Patey	8/21/2025	Lake Monomonac	16' Starcraft	Paradise Island large cluster	2	8.00	Silt, algae
				8/21/2025 total		23.50	
Jamie Burleigh	8/22/2025	Lake Monomonac	16' Starcraft	Robertson Road cove	1	4.00	Silt
Sarah MacNeilage Patey	8/22/2025	Lake Monomonac	16' Starcraft	Robertson Road cove	1	4.00	Silt
Jamie Burleigh	8/22/2025	Lake Monomonac	16' Starcraft	Paradise Island three marks	1	negligible	Silt, sand
Sarah MacNeilage Patey	8/22/2025	Lake Monomonac	16' Starcraft	Paradise Island three marks	1	2.00	Silt, sand
Jamie Burleigh	8/22/2025	Lake Monomonac	16' Starcraft	Paradise Island large cluster	1	1.00	Silt
Sarah MacNeilage Patey	8/22/2025	Lake Monomonac	16' Starcraft	Paradise Island large cluster	1	1.50	Silt
				8/22/2025 total		12.50	
				Total gallons extracted		36.00	

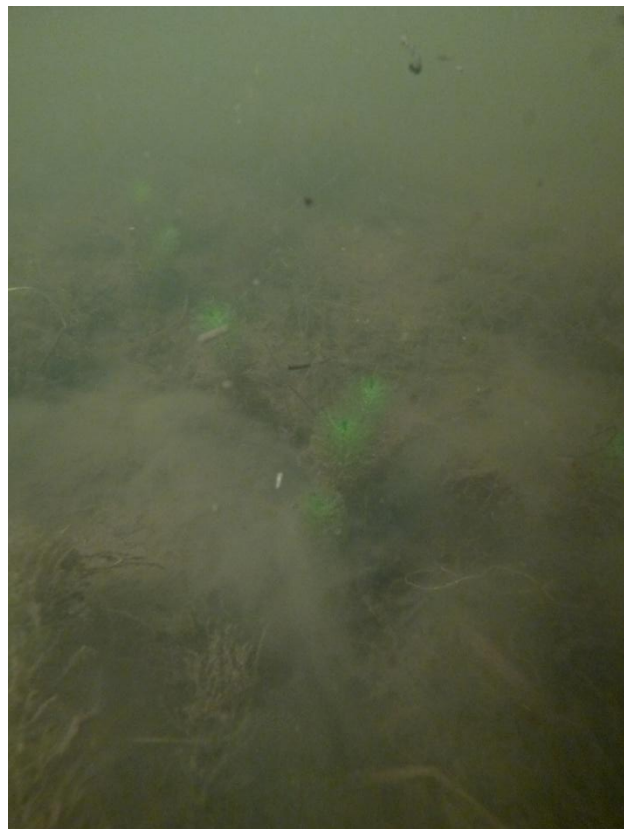
Map:



Photos:



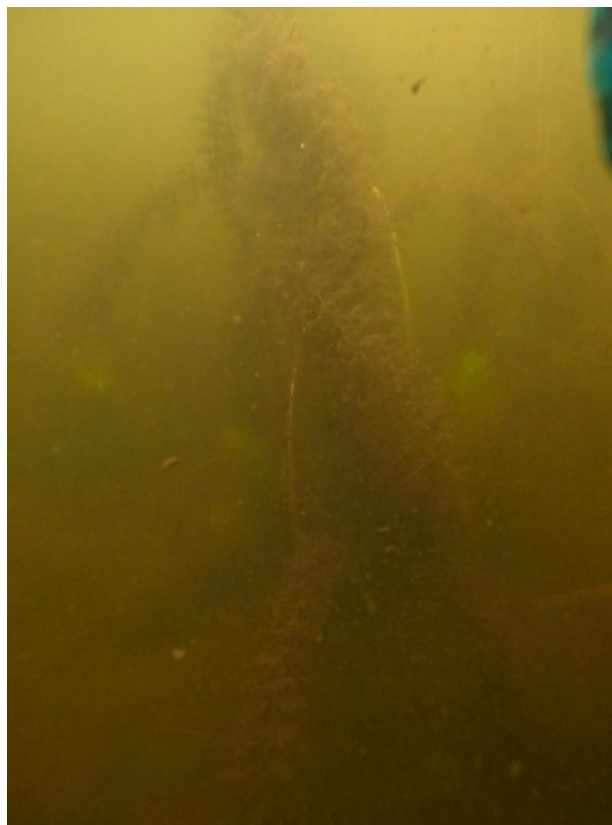
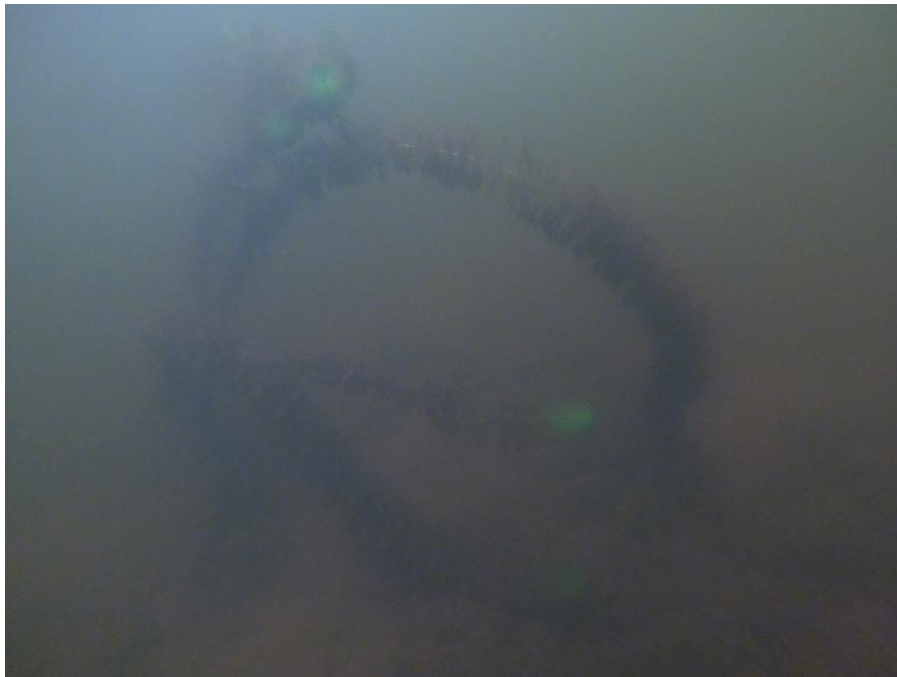
Left: The small variable milfoil plant at the mouth of Robertson Road cove as seen from the surface.



Bottom left: The variable milfoil plant before the Baja speedboat in the long, north-most cove, where one long frond was surrounded by much smaller growth.

Bottom right: A few of the small growing variable milfoil plants on the edge of the large pull pit in Robertson Road cove.

All photos: Variable milfoil plants from the edges of the large pull pit found in Robertson Road cove. Most plants had long fronds reaching the surface with bright green tips and the rest of the plant covered in silt.



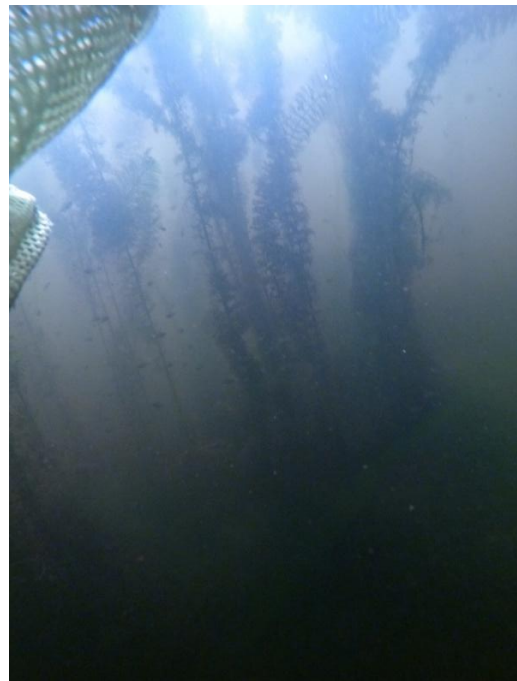


Left: The medium sized variable milfoil plant between the large plants and the dock in the corner of Monomonac Terrace and Paradise Island Road.



Above left & right: Surface views of two of the large variable milfoil plants in the large field in the corner of Monomonac Terrace and Paradise Island Road.

Right: A very large plant of native milfoil seen from the surface in the cove along East Monomonac Road.



Above left & right: The large variable milfoil plants seen from the surface in the corner of Monomonac Terrance Paradise Island Road seen from underwater.

Above right: One of the variable milfoil plants without a large, main root ball, but with fronds with shallow roots.